

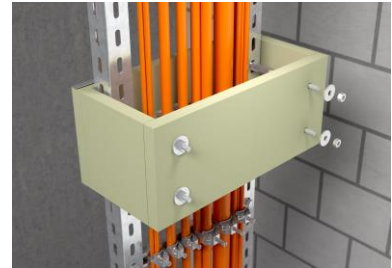
October 2022

Page 1 of 1

ZSE90 strain relief

New options for effective support of vertical cable systems with integrated maintenance of electrical function

OBO Bettermann is expanding the product range of the ZSE90 strain relief to include new variants with foam filling. This is particularly practical with cable assignments with a high number of cables and is an extraordinary solution for effective support of suspended rising sections.



To prevent the cables for the maintenance of electrical function tearing in the event of fire, DIN 4102 Part 12 requires effective supporting of the cables at a spacing of a maximum of 3.5 metres. The OBO solution for this requirement is the ZSE90. The housing, which is made of non-combustible material, is mounted directly over a series of clips. The filling ensures that the clips in the housing remain relatively cold and the cable clamping remains intact.

More flexibility and simple installation



Instead of filling them with mineral wool, the new empty housings of the ZSE90 are filled with PYROPLUG® Block foam blocks and PYROSIT® NG fire protection foam. The amount of filling material required in specific cases is dependent on the individual cable assignment. For this reason, with

the new variants, it is possible to choose flexibly which quantities of PYROPLUG® Block and PYROSIT® NG are required. The filling tip of the PYROSIT® NG fire protection foam allows even the smallest cavities to be reached easily – which is ideal with cable assignments with a high number of cables.

Numerous housing variants for each installation

The new, three-sided empty housings of the ZSE90 can be used for rising sections on the wall, vertical single-clip installations and cable installations on profile rails. In addition, the four-sided variant offers the option of strain relief for suspended rising sections for the maintenance of electrical function. Here, the non-combustible housing is mounted and filled on the side rails of the rising section using a matching lock plate and appropriate mounting set. The suspended rising section is enclosed on all sides, reliably preventing a fire load on the clips.

For further information:

Fabienne Wolf-Kunke
Sales Marketing

OBO Bettermann Vertrieb
Deutschland GmbH & Co. KG
Langer Brauck
58640 Iserlohn, Deutschland

Tel.: +49 2371 7899-2241
E-Mail: wolf-kunke.fabienne@obo.de
www.obo.de